

BERGSTROM

Since 1949, **Bergstrom** has been supplying to many of the world's largest and most respected companies with their heating and air conditioning solutions.



INNOVATION

Complete engineering, design and development capabilities.



MANUFACTURING

Manufactured using Bergstrom's World class manufacturing systems and processes.



QUALITY

Designed, engineered and manufactured in the U.S. and China facilities.



www.bergstrominc.com



World Headquarters

Rockford, U.S.A.

+ 1 - 815-874-7821

Europe

Wales, United Kingdom

+ 44 - 144-386-212

Madrid, Spain

+ 34 - 918-775-840

Asia-Pacific

Changzhou, Jiangsu, China

+ 86 - 519-511-7821



BUS SYSTEM PACKAGE GUIDE

Cool Zone Systems



EVAPORATORS

CONDENSERS

BBUS-TBSPG-21R2-EN-B



BEFORE YOU DECIDE WHAT AC SYSTEM IS BEST, ENTER THE COOL ZONE™ BY BERGSTROM.

Welcome to the Cool Zone®

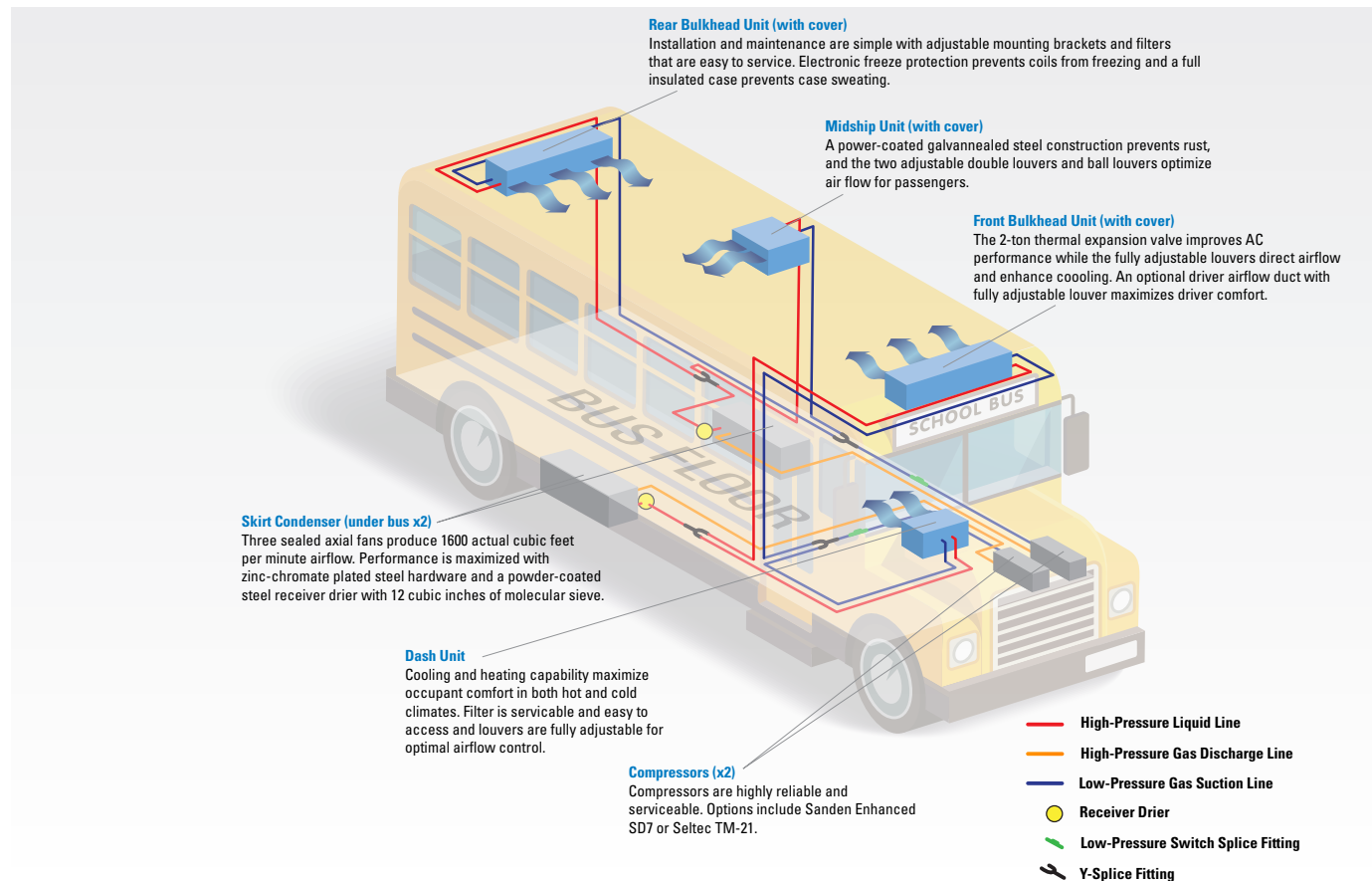
When it comes to choosing an air conditioning system for your bus fleet, quality, reliability and performance are critical. Bergstrom's new Cool Zone™ bus air conditioning system is a solution you can count on. The system consists of front and rear bulkhead units, a ceiling mount unit with a two-fan or three-fan condenser. The result? Cool Zone is so effective that it cools the bus down quickly and efficiently.

Various Bus System Packages Available

System packages can consist of any combination of bus systems. Factors that determine the different types of bus system packages can include the size of the bus, state regulations and/or average weather temperatures in the different regions of the U.S.

Suggested Compressor: Sanden SD7 Enhanced 12V

Warranty is a 3-year unlimited mileage limited warranty



Model	Front Bulkhead	Dash Unit	Single Midship	Rear Bulkhead	3-Fan Condenser
Dimensions (mm)	1200 W x 353 H x 199 D	371 W x 556 H x 290 D	776 W x 370 H x 665 D	1200 W x 353 H x 199 D	1299 W x 270 H x 407 D
Dimensions (in.)	47.24 W x 13.9 H x 7.83 D	14.6 W x 21.89 H x 11.42 D	30.55 W x 14.57 H x 26.18 D	47.24 W x 13.9 H x 7.83 D	51.14 W x 10.63 H x 16.02 D

4-Unit System | Up to 136,000 BTU

This system includes a Front Bulkhead Unit, Dash Unit, Midship Unit, Rear Bulkhead Unit and 2 Skirt Condensers.

3-Unit System | Up to 126,000 BTU

One-way systems include a Front Bulkhead Unit, Rear Bulkhead Unit and a Dash Unit. Two-way systems include a Front Bulkhead Unit, Rear Bulkhead Unit and a Midship Unit. Multiple midship options are available for buses which cannot accommodate bulkhead units. In addition, this system has two skirt condensers.

2-Unit System | Up to 120,000 BTU

This system include a Front Bulkhead Unit and Rear Bulkhead Unit. In addition, this system has one skirt condenser.