

These rooftop packages are suitable for use with remote compressors and are typically in 12 or 24V DC.

Both units are designed for mining and industrial use and incorporate the highest quality componentry, construction and serviceability features.

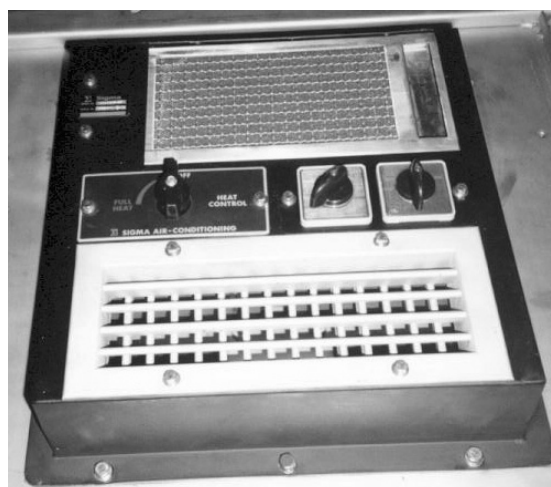
The TDR5 is suitable for drills and heavy trucks while the TDR4 is for rubber tired machinery. Both are stainless and operate on 134a refrigerant.

Options:

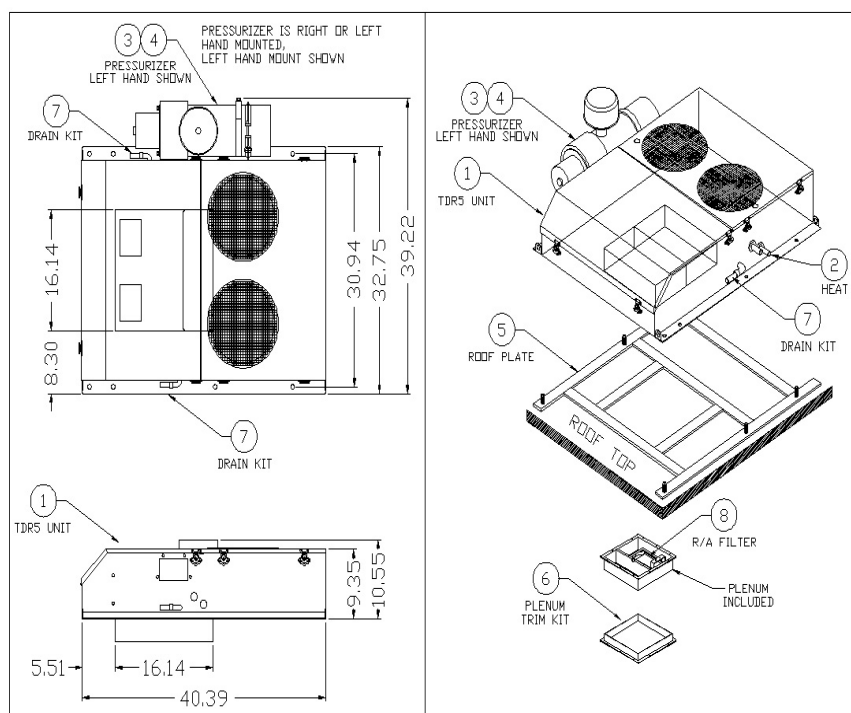
Coated Coils

Alternative Voltages

Hydraulic Power Packs



TDR5



Technical Specifications:	
Model	TDR5
Weight	300 lbs 136 kg
Cooling Capacity	18,000 btu/hr 5.2 kw
Heating-Hot Water	35,000 btu/hr 10.0 kw
Airflow - High	400 cfm 190 l/s
Airflow - Med	350 cfm 165 l/s
Airflow - Low	300 cfm 140 l/s
Pressurization	110 cfm 50 l/s
Condenser Motors	2 Fully Sealed
Condenser Fans	10" 250mm
Evaporator Motor	2 Fully Sealed
Evaporator Fans	2 Single Inlet
Motor Protection	Circuit Breakers

T Series

This is a very heavy duty system suitable for use on tracked type vehicles of off highway mining and construction equipment. This will include dozers, graders, loaders, drills, crane cabs, locomotives, etc.

Construction is heavy gauge stainless steel and the highest quality components have been used. Refrigerant is 134a.

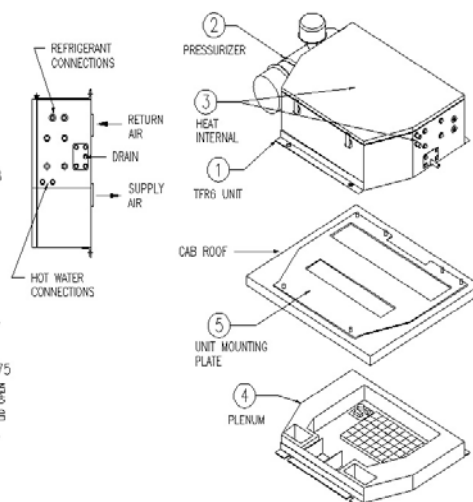
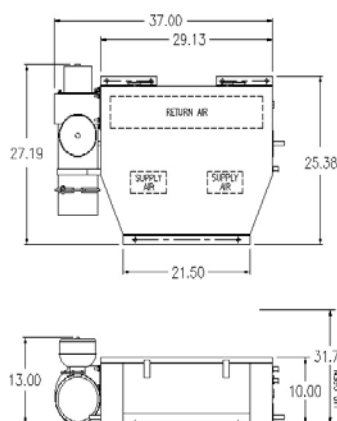
This system requires a remote condenser and compressor.



TFR6

Technical Specifications:

Model	TFR6	
Weight	200 lbs	91 kg
Cooling Capacity	22,500 btu/hr	6.5 kw
Heating-Hot Water	35,000 btu/hr	10.0 kw
Airflow - High	480 cfm	225 l/s
Airflow - Med	390 cfm	185 l/s
Airflow - Low	350 cfm	165 l/s
Pressurization	110 cfm	50 l/s
Evaporator Fans	Double Wheel, Double Inlet, Steel	
Evaporator Motor	Double Shaft, Fully Sealed, Ball Bearing	
Pressurizer Motor	Single Shaft, Fully Sealed, Ball Bearing	
Motor Protection	Circuit Breakers	
Heater Valve	Electric	



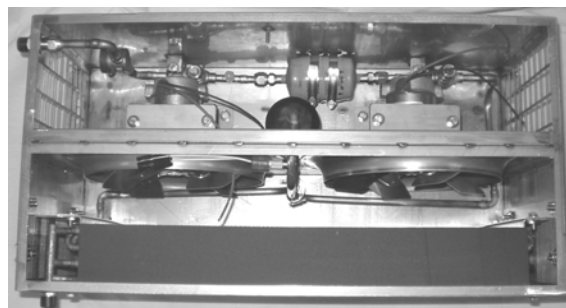


The TCR6 condenser package is used in conjunction with BES units FFR6, TFW5, TFR6 & TPR6 24V versions.

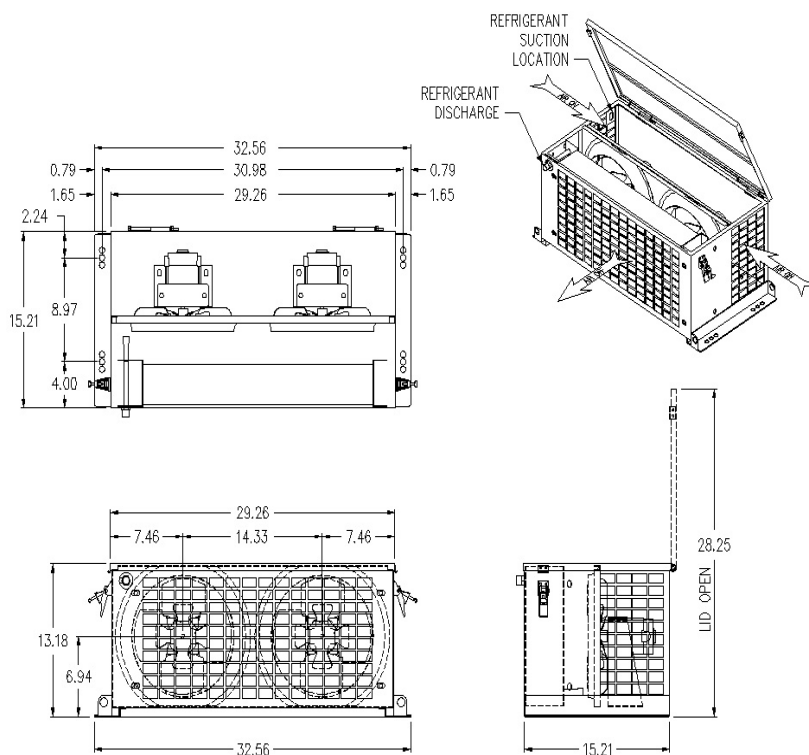
The TCR6 package is constructed from heavy gauge stainless steel.

Technical Specifications:

Model	TCR6
Capacity	For use up to 22,000 Btu/Hr
Airflow	2400 CFM



TCR6



Product Identification

Item No.	TCR6 (12V)	TCR6 (24V)	Description
1	TCR6AX1C	TCR6BX1C	CONDENSER PACKAGE



T Series

Filtration & Pressurization Systems



FFR6

Technical Specifications:

Model	FFR6	
Type of Unit	cool/heat/filters	
Voltages Available V.D.C.	12 or 24	
Voltages Available V.A.C.	115-1-50/60	
Pressurizer Watts @ 24vdc	150	
Pressurizer Watts @ 115vac	200	
Pressurizer Airflow:	FVV60	FVW100
Clear filter, 0.00" w.c. ESP	170cfm	365cfm
0.25" w.c. ESP	145cfm	325cfm
0.50" w.c. ESP	126cfm	285cfm
Max. Fan Static Pressure Available	2.5" w.c.	5.3" w.c.
No. of Blower / Motors	1	
No. of Motor Speeds	2	
Method of Speed Change	manual	
Pre-Cleaner ---Roughing	1	
Pre-Filter ---- Disposable	12" x 24" x 1"	
No. of Final Filter Elements	2	
Permanent Filter Size	13"H x 25"Lg	
Type of Permanent Filter	Pleated	
Filter Material	Spun Polyester	
Filtration Efficiency	99% @ 0.3 microns	
Outlet Spigot	n/a	
Compressed Air Inlet		
Compressed Air Pres. Req'd		
Mounting Type	Roof	
Cleaning Trigger		
Motor External Protection	Circuit Breaker	
Internal Thermal Prot.	yes	
Pressurizer Casing Mat'l	Plastic	
Weight	325lb/148kg	

In order to completely address the dust problem at a mine site, a combination of good pressurization and high quality return air filtration is required in the air conditioning unit. BES has designed the FFR6 unit with the following goals:

Higher heating (30,000 btu/hr) and colling capacity (22,000 btu/hr) and airflow (450 cfm) than the TDR5, to accommodate higher amounts of outside pressurization air

Larger return air filter and a low cost disposable first stage filter, which will eliminate maintenance between machine service days. Consequently, no one gets covered in dust while cleaning filters.

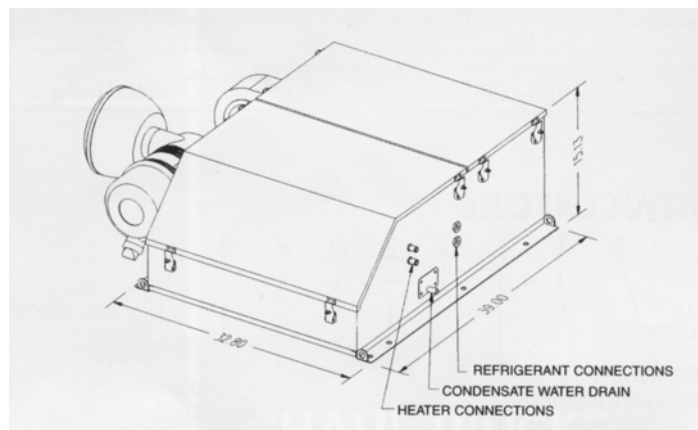
High efficiency, servicable, final filter to ensure extremely clean air is supplied to the cab.

Optional pressurization systems; either FVV60, as shown, or FVW100 for a total treatment.

Electronic temperature control for optional in-console mounting.

A choice of either radiator mounted or fan forced condensers.

Same mounting as the TDR5, so field retrofit is easy.





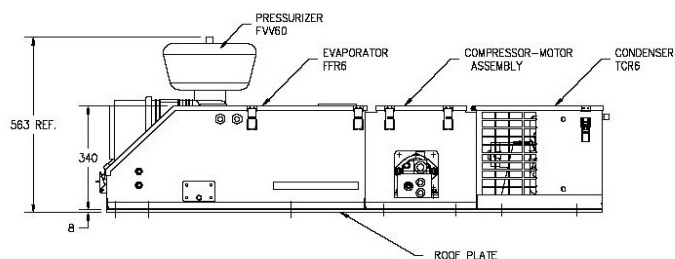
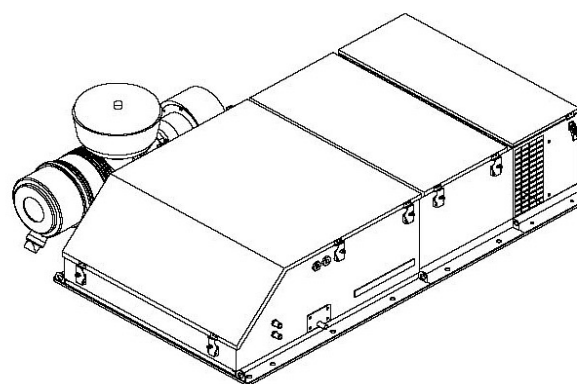
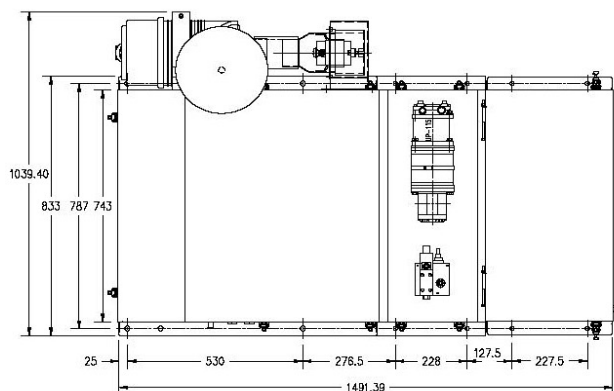
The TPR6 has been designed to provide high levels of air filtration and also offer climate control through refrigeration for cooling and hot water for heating. It is designed for rooftop mounting. The compressor is driven hydraulically and is mounted within the unit.

The package comprises 4 basic modules.

- Heater, air conditioner, return air filter.
- Outside fan forced filtration and pressurization system.
- Hydraulic motor compressor set, control head, pressure relief and flow control valve.
- Fan forced condenser assembly



TPR6



Technical Specifications:

Model	TPR6BX1C
Type of Unit	air conditioner
Compressor Power	hydraulic
Cooling Capacity	22,500 BTU/hr (6 kw) at 100°F and 81°F FDB/67°F WB (38°C and 27/19°C) Return Air
Heating Capacity	At 180°F (81°C) water is 40,000 BTU/hr.
Air Flow	450 cfm max.
Weight (lbs/kg)	

Product Identification

Item No.	TPR6 (12V)	TPR6 (24V)	Description
1	N/A	TPR6BX1C	TPR6 Self-Contained Hydraulic AC Unit

T Series

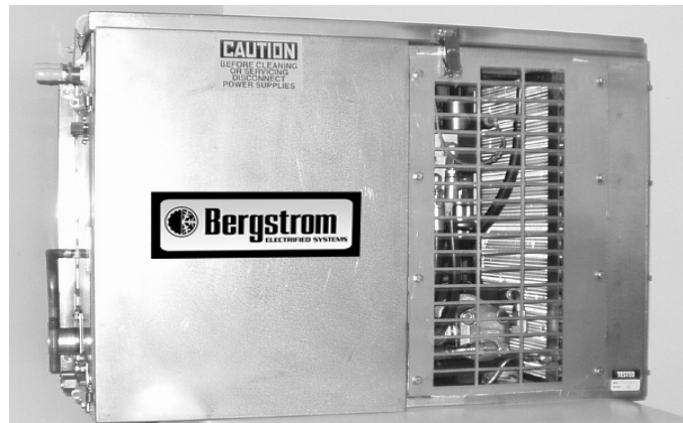
The TPW5 unit is suited for, Loaders, Walkway or Deck Mounting.

The TPW5 unit is constructed from heavy gauge stainless steel.

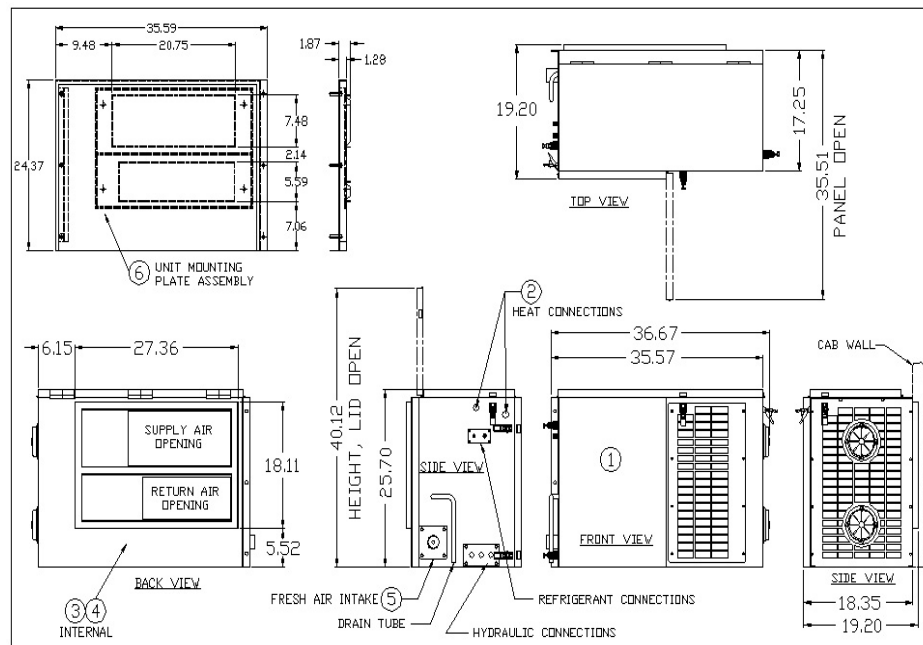
Hydraulically driven compressor.

Technical Specifications:

Model	TPW5
Cooling Capacity	18,000 btu/hr
Heating Capacity	40,000 btu/hr

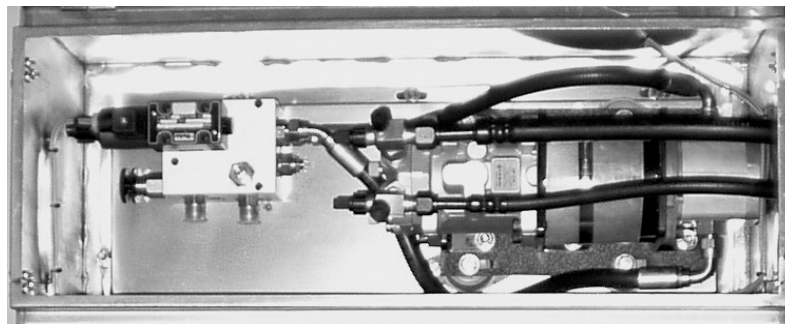


TPW5

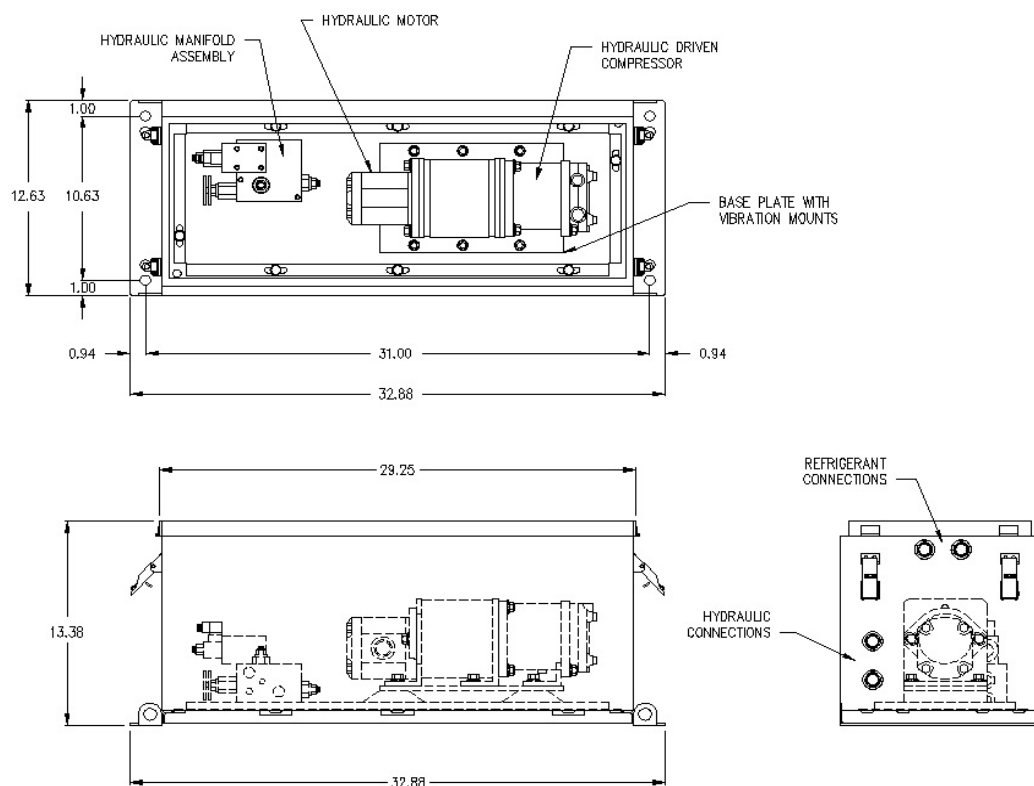


The TBV6 hydraulic compressor package is used in conjunction with BES units EC5, TDR5, FFR6, TPR6 & TPR4 12V versions.

The TBV6 package is constructed from heavy gauge stainless steel.



TBV6



Product Identification			
Item No.	TBV6 (12V)	TBV6 (24V)	Description
1	TBV6AX1C	TBV6BX1C	HYDRAULIC COMPRESSOR PACKAGE