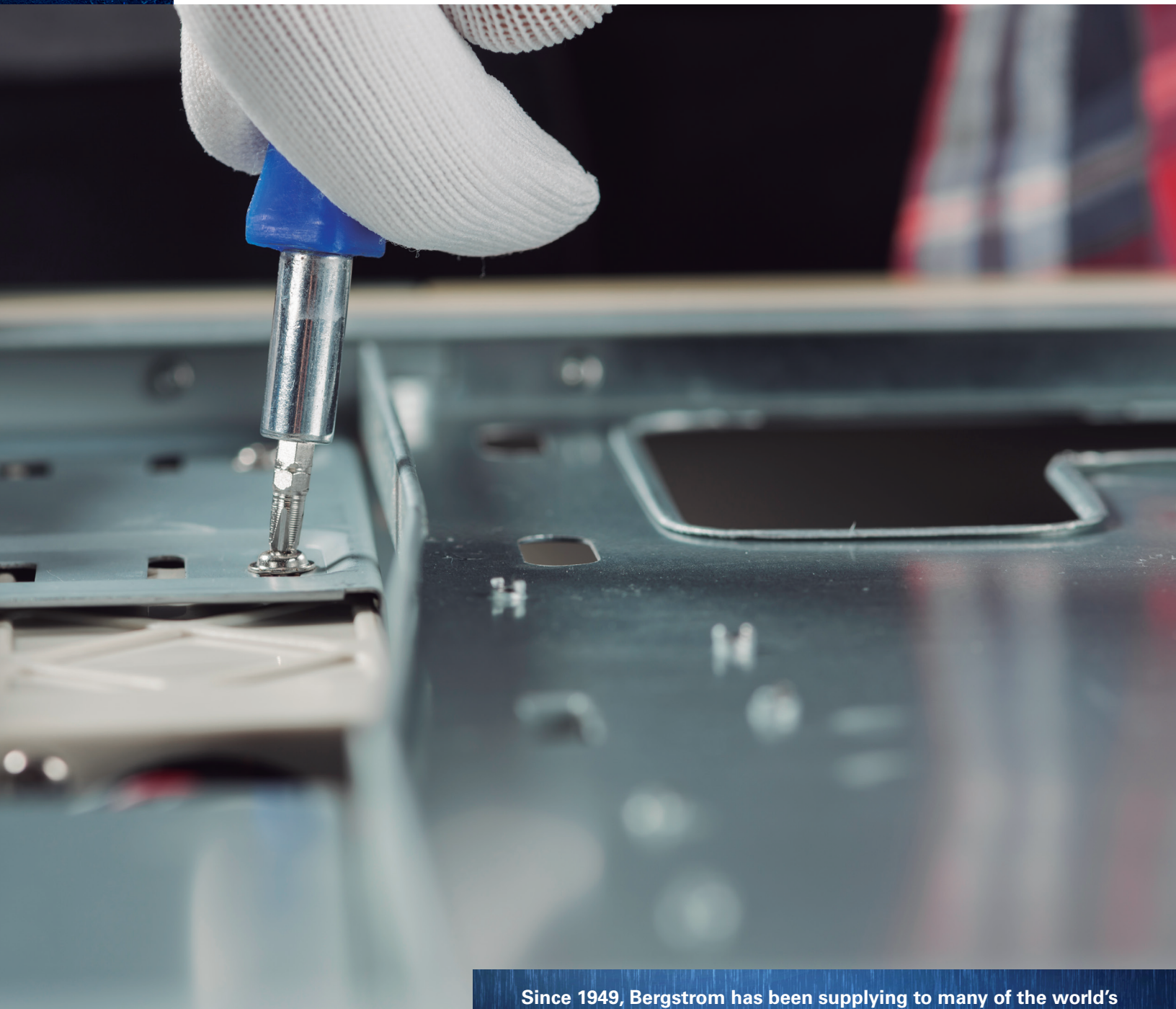




## ADVANCED COMPONENTS



Since 1949, Bergstrom has been supplying to many of the world's largest and most respected companies with their heating and air conditioning solutions. Complete engineering, design and development capabilities. Manufactured using Bergstrom's World class manufacturing systems and processes. Designed, engineered and manufactured in the U.S. and China facilities.

## New Brushless DC Motors

The air moves through the new brushless motors to help reduce the power required to operate HVAC systems.



Axial fan for integrated powertrain and condenser cooling

### Features

- **Voltage:** 12/24/48VDC
- **Electronic Interface:** PWM/50-2000Hz
- **Thermal Derating:** 125°C
- **Load dump:** 5a
- **Sealing:** IP68, IP69K
- **Protection:** OC, OV, UV, OT, Stall
- **EMC Emission:** Class 5
- **Diagnostic:** Digital/LIN
- **Smart:** LIN Version

### Blower Assembly



### Speed Control:

- Analog
- PWM
- LIN

## Electrified

### Electric Compressor

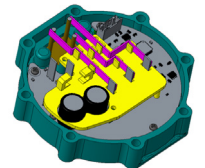
A reliable and efficient electrically-powered compressor for your HVAC solutions. **48V to 800V DC**



- Power: DC48V/2880W
- Controller Integrated
- IP56 (can be IP69K)
- EMC Class 3 (CISPR25)
- Speed control: Configurable for analog, PWM, LIN and CAN



Diagnostic capabilities including monitor temperatures, speed control, pressure and voltage.



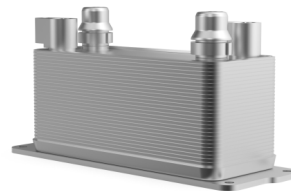
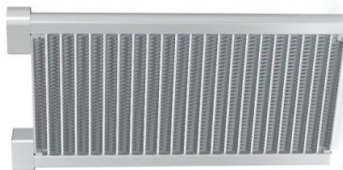
## Heat Exchangers

Design, validation and production of robust, microchannel heat exchangers



Refrigerant to Air HX

Coolant to Air HX



Refrigerant to Coolant HX

### Benefits of our heat exchangers

- **Lighter** than conventional tube and fin components.
- **Cost savings** by using better, cost-effective materials and less refrigerant for lower charge weight.

### Electric Coolant Pump

Electrified coolant pump for on-demand cooling which reduces power requirements, fuel consumption and emissions. **48V DC to 800V DC**



### Single Wheel Blower

#### IP Class:

- IP68
- IP69K

#### Built to last:

- >40,000 hours



**Bergstrom**