

## M-Series

The multipurpose M-Series is designed to be used on larger cabs where 3-phase electrical Capacity is available, such as draglines, drills, crane cabs and shovels. These are the largest systems in the Bergstrom line and are available in capacities of 18,000 BTU/hr to 54,000 BTU/hr. Various voltages are available.

### Available Capacity Options:

- 208-230/1/60
- 200-230/3/60
- 200-220/3/50
- 380-415/3/50
- 460/3/60
- 460/3/50
- 575/3/60

A variety of control voltages also available

### Special Options:

- Coated Coils
- Alternative High Ambient Refrigerants

## Product Data & Specifications

#### Technical Specifications:

Model	MPV5	MPV9	BES2400
Cooling Capacity	18,000 btu/hr (5,2 kW)	31,000 btu/hr (8,9 kW)	24,000 BTU/hr (7 kW)
Heating Capacity	34,000 btu/hr (10,0 kW)	41,000 btu/hr (12,0 kW)	20,450 BTU/hr (6kW)
Heating Stages	two	two	
Airflow - High Speed	600 CFM (280 l/s)	1300 CFM (610 l/s)	
Airflow - Low Speed	500 CFM (240 l/s)	870 CFM (410 l/s)	600 CFM (1,019 m³/hr)
Weight	540 lbs (245 kg)	1300 lbs (590 kg)	208 lbs (110 kg)
Compressor Type	scroll	scroll	
Number of Cylinders	n/a	n/a	
Pressurization	120 CFM (56 l/s)	120 CFM (56 l/s)	
Controls	110 V.A.C.	110 V.A.C.	
Motor Protection	Circuit Breaker	Circuit Breaker	
	Thermal Overload	Thermal Overload	
Compr. Capacity Control	none	none	
Condenser Fan	1 speed	1 speed	
Refrigerant Metering	TXV	TXV	
Thermostat-Electronic 5 Stage	Standard	Standard	

Rating Conditions: Cooling Capacity - Indoor 80°F DB/67°F WB with Outdoor 110°F DB/60°F WB

Heating Capacity @ Rated Voltage

For capacities at ARI Std. 210 conditions of cooling capacity, with Indoor 80°F DB/67°F WB and Outdoor 95°F DB/75°F WB add approximately 75% to rated capacity.

Above Spec based on 460/30/60 versions heating and cooling, capacities may vary depending on supplied voltage.



## Features

- Heavy gauge stainless steel construction
- Designed for smaller mining cabs and industrial equipment
- Easy installation
- Quiet and efficient scroll compressors
- Two-stage electric heat
- Positively pressurized electrical cubicle to keep dust and water out
- 5-stage electronic thermostat with remote control for operator comfort
- Compatible with new automatic cleaning pressurizer

## Suggested Applications



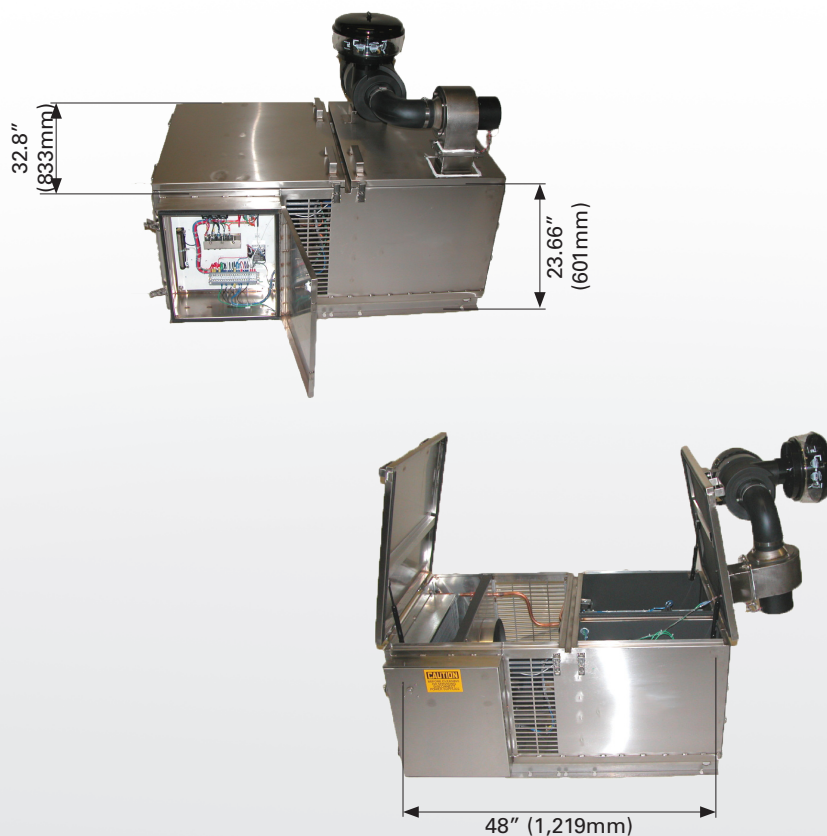
## Technical Specifications

Model	MPV5
Capacity*	Cooling: 18,000 BTU/hr (5,3 kW) Heating: 34,000 BTU/hr (10,0 kW)
Amps	20 AMPS @ 460/3/60
Maximum air flow	High: 600 SCFM (1,019 m <sup>3</sup> /hr) Low: 500 SCFM (850 m <sup>3</sup> /hr)
Dimensions (L x W x H)	48in x 32.8in x 23.66in (1,219mm x 833mm x 601mm)
Weight	540 lb (244,9 kg)
Mounting Position	Rooftop, Walkway or Deck

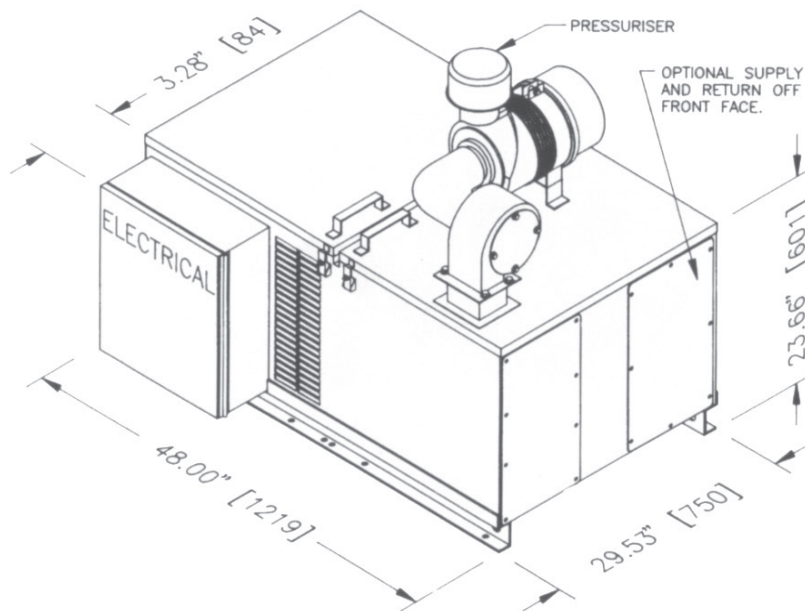
(\*) System cooling capacity is based on system component-calculated capacities in accordance with IMACA 200 standard test conditions: indoor 80°F DB/67°F WB with outdoor 110°F DB/60°F WB. Heating capacity is at rated voltage in accordance with SAEJ638.

Unless otherwise stated, performance measurements are conducted in accordance with SAE J638 for heaters and IMACA 200 for evaporators.

## Dimensions layout



## Line Drawing



Model Specifications:	MPV5
Cooling Capacity	18,000 BTU/hr (5,2 kw)
Heating Capacity	34,000 BTU/hr (10,0 kw)
Heating Stages	2
Airflow - High Speed	600 CFM (280 l/s)
Airflow - Low Speed	500 CFM (240 l/s)
Compressor Type	Scroll
Pressurization	120 CFM (56 l/s)
Controls	110 VAC
Motor Protection	Circuit Breaker Thermal Overload
Compressor Capacity Control	None
Condenser Fan	1-Speed
Refrigerant Metering	TXV
Thermostat	Standard
- Electronic 5-stage	

Rating Conditions: Cooling Capacity  
- Indoor 80°F DB/67°F WB with  
Outdoor 110°F DB/60°F WB  
Heating Capacity @ Rated Voltage

For capacities at ARI Std. 210 conditions of cooling capacity with 80°F DB/67°F WB and Outdoor 95°F DB/75°F WB add approximately 7.5% to rated capacity.

Above spec based on 460/30/60 versions of heating and cooling, capacities may vary depending on supplied voltage.



When placing an order please contact your sales representative to review your order to ensure the proper system has been identified for your vehicle application.

Availability of the products shown in this catalog is subject to change without notice by Bergstrom, Inc. For the most current product information please visit the Kysor distributor website at <https://parts.shop.bergstrominc.com/>.

### Warranty

- 1-year limited warranty



### Suggested Applications



### Features

- Heavy gauge stainless steel construction
- Triple-gasketed evaporator cover to eliminate dust and water ingress
- Positively pressurized electrical cubicle to keep dust and water out
- Very easy to service and keep clean
- Quiet operation with large scroll compressor
- Higher capacity to handle increased cooling and heating loads due to increases in amounts of air pressurization
- Head pressure control for cooler climate operations without sacrificing performances in hot locations
- No pre-cleaner required since pressurizer intake is from condenser fan intake
- Capacity controls to enhance operation over a wide temperature range
- 5-stage electronic thermostat with remote control for operator comfort
- Compatible with new automatic cleaning pressurizer
- Several Capacity options available

### Technical Specifications

Model	MPV9
Capacity*	Cold: 30,369 BTU/hr (8,9 kW) Hot: 40,946 BTU/hr (12,0 kW)
Amps	25 AMPS @ 460/3/60
Maximum air flow	High: 1,300 SCFM (2,209 m <sup>3</sup> /hr) Low: 870 SCFM (1,478 m <sup>3</sup> /hr)
Dimensions (L x W x H)	47.48in x 62.72in x 32.75in (1,206mm x 1,593mm x 832mm)
Weight	1,100 lb (499 kg)
Mounting Position	Rooftop, Walkway or Deck

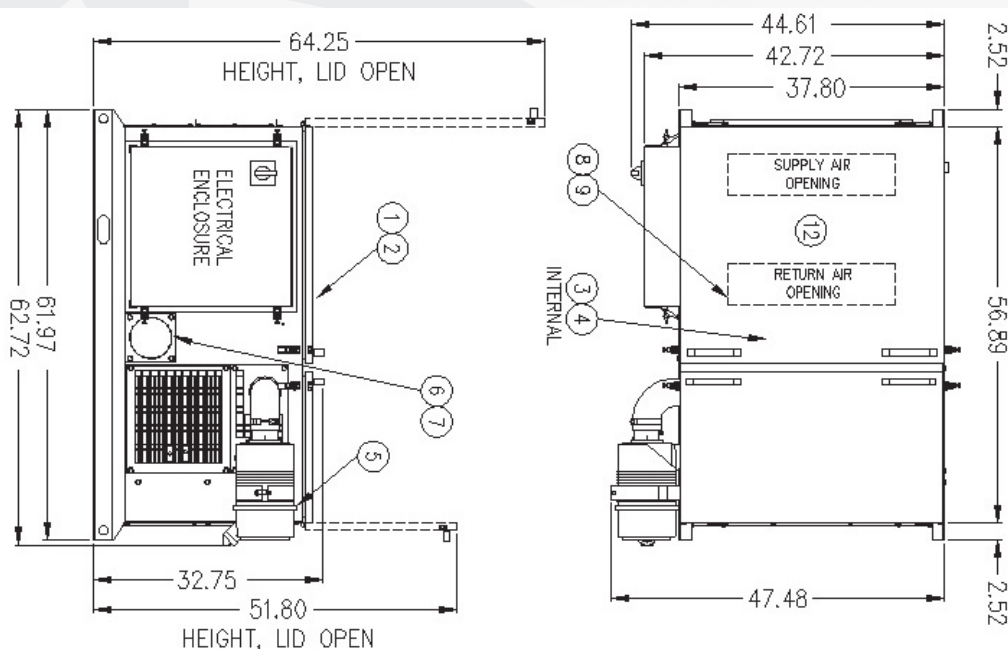
(\*) System cooling capacity is based on system component-calculated capacities in accordance with IMACA 200 standard test conditions: indoor 80°F DB/67°F WB with outdoor 110°F DB/60°F WB. Heating capacity is at rated voltage in accordance with SAEJ638.

Unless otherwise stated, performance measurements are conducted in accordance with SAE J638 for heaters and IMACA 200 for evaporators.

## Dimensions layout



## Line Drawing



Model Specifications:	MPV5
Cooling Capacity	31,000 BTU/hr (8,9 kw)
Heating Capacity	41,000 BTU/hr (12,0 kw)
Heating Stages	2
Airflow - High Speed	1,300 CFM (610 l/s)
Airflow - Low Speed	870 CFM (410 l/s)
Compressor Type	Scroll
Pressurization	120 CFM (56 l/s)
Controls	110 VAC
Motor Protection	Circuit Breaker Thermal Overload
Compressor Capacity Control	None
Condenser Fan	1-Speed
Refrigerant Metering	TXV
Thermostat	Standard
- Electronic 5-stage	

Rating Conditions: Cooling Capacity  
- Indoor 80°F DB/67°F FWB with  
Outdoor 110°F DB/60°F FWB  
Heating Capacity @ Rated Voltage

For capacities at ARI Std. 210 conditions of cooling capacity with 80°F DB/67°F FWB and Outdoor 95°F DB/75°F FWB add approximately 7.5% to rated capacity.

Above spec based on 460/30/60 versions of heating and cooling, capacities may vary depending on supplied voltage.



When placing an order please contact your sales representative to review your order to ensure the proper system has been identified for your vehicle application.

Availability of the products shown in this catalog is subject to change without notice by Bergstrom, Inc. For the most current product information please visit the Kysor distributor website at <https://parts.shop.bergstrominc.com/>.

### Warranty

- 1-year limited warranty