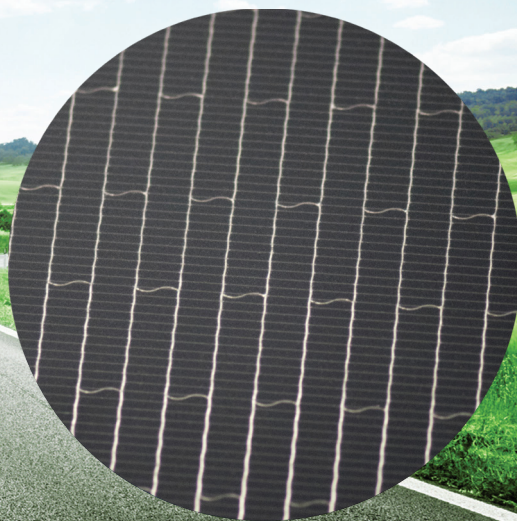




BERGSTROM SOLAR ENERGY SYSTEMS

**MORE POWER.
MORE DURABILITY.
MORE RUN TIME.**



Harness the full potential of the sun with Bergstrom's innovative Solar Energy Systems. Our flexible solar panels conform to any surface and are virtually unbreakable. You'll get more power. Increased durability. More comfortable drivers. And more run time! **All adding up to measurable ROI starting from the moment you install.**



Bergstrom®



BETTER SOLAR SOLUTIONS

Together with solar patented technology, Bergstrom has taken existing solar solutions and made them better. Take driver comfort to the next level by using solar energy to significantly extend the run time of electric HVAC systems such as Bergstrom's NITE no-idle solution. Use excess solar energy to augment charging of the truck batteries extending use of hotel loads without idling the engine.

POWER YOUR ROI WITH THE SUN

The Bergstrom Solar Energy System will be a valuable addition to your fleet. Most of our customers see a full return of their investment in 6 to 18 months.

SAVE FUEL

- Extend power availability without idling engine.
- Add up to 10 hours of run-time.
- Relieve alternator load.

REDUCE ASSET DOWNTIME

- Excellent charge source for your batteries.
- Practically eliminate dead batteries.
- Avoid costly jump starts.

REDUCE MAINTENANCE COSTS

- Reduce battery depth of discharge.
- Extend battery life by up to 200 percent.
- Reduce frequency of costly DPF cleaning, oil changes and engine overhauls.

30% Solar Investment Tax Credit available! Consult your tax advisor for more information.

PATENTED SOLAR PANELS

Bergstrom's innovative solar panels are built to UL standards and consist of interconnected metal grids that serve as inter-cell and intra-cell connectors. This patented grid technology results in solar panels that are flexible and lightweight, conforming to nearly any surface. Features include:

- Versatile shapes to suit any surface size and features.
- A simple "Plug & Play" system that is easy to install.
- 1/8-inch thick, lightweight panels robust enough to handle wind lift, thermal cycles, vibrations and more.

HOW DOES BERGSTROM STACK UP AGAINST THE COMPETITION?

Bergstrom's Solar Energy System is unlike any system on the market. When you install the solution, you'll quickly realize the benefits of the most powerful and durable solar panel for the transportation industry.

- 60% more amp-hours delivered to the battery when compared to conventional solar systems.
- Improved light capture and reduced sheet resistance.
- Bergstrom's panels with patented technology lasted for more than 900 temperature cycles compared to fewer than 120 cycles on competitive panels.

